



WELLINGTON
COLLEGE

ANNUAL INFORMATION BOOKLET

2009/2010

mission

Our aim is for Wellington College to be one of Britain's, and the world's, leading and most inspiring co-educational schools for boarding and day pupils. We wish to provide a transformative experience, developing to the full each pupil's eight aptitudes to bring the greatest likelihood of long term happiness and fulfilment. The College will build upon its honourable past, dating back to the nineteenth century, while adapting its values and traditions for the twenty first century. Wellington is a Christian foundation, though remaining open to and respectful of children from all religious faiths. A commitment to leadership, service and an international outlook lie at the heart of its values. To fulfil this mission, we aim to encourage and support all our pupils:

- 1 *To develop their full potential academically, culturally, spiritually and in sports*
- 2 *To develop into open-hearted and open-minded young adults*
- 3 *To question, to think and to work independently*
- 4 *To respect the views and beliefs of everyone in our community and beyond*
- 5 *To serve and support others at all times*
- 6 *To be calm and purposeful in everything they do*
- 7 *To help one another achieve the most from their school years*
- 8 *To prepare themselves fully for life after school*
- 9 *To become the person each uniquely is rather than being influenced unduly by others*
- 10 *To look after body, emotions and mind through proper rest, relaxation and nourishment.*

introduction



This preliminary information about Wellington College serves to introduce you to our historic school, thriving under the inspirational leadership of the Master, Dr Anthony Seldon.

Separately available will be the Master's revised Development Plan for Wellington College 2005–2015, in which are reviewed the school's mission, the 150th Anniversary (1859–2009), twelve core themes for the College, co-education and size, the Wellington Academy and institutional advance as supported by the Development Office. In the booklet 'The New Wellington College' six traditional strengths and six areas of innovation are presented.

Wellington is a vibrant and challenging co-educational school for boarding and day pupils. Demand for places is high. Selection is not only on academic merit, but on potential for broad contribution to school life.

We believe that full co-education provides an ideal environment for both boys and girls in which to learn and to develop into rounded balanced adults. The school overall and the size of Houses in particular are small enough for each pupil to be known as an individual and as a distinctive human being.

This academic year brings further, most significant, change to our curriculum. Senior pupils pursue an option to study for the International Baccalaureate to examinations for the first time. Pupils joining the Third form will be the first, in any Independent School, to have the opportunity for the unsurpassed breadth and intellectual stimulation available in studying the MYP, or Middle Years programme, of the IB. Also, this year we welcome distinguished intellectuals as Thinker in Residence and Philosopher in Residence.

The academic, extra-curricular and pastoral life at Wellington is shaped by our belief that everyone has eight principal aptitudes or gifts, which if not developed at school can remain undiscovered. One of Wellington's distinctive contributions in education is the pioneering of classes in well-being, in association with Cambridge University's Well-being Institute.

150th
anniversary
1859–2009



learning

4



The ideal lesson at Wellington is focused, paced, varied and engaging. We appreciate the value of many traditional teaching methods and we employ them with skill and enthusiasm, but we also believe that lessons are best when pupils are actively involved in a dynamic process of thinking and discovering understanding for themselves. The way pupils learn is more important than the way teachers teach, and we therefore place increasing emphasis on interactive and co-operative learning and on devising lessons that draw on the different knowledge, aptitudes and learning styles of individual pupils.

Like our teaching, our curriculum is vibrant, demanding and progressive. With our groundbreaking well-being course and our classes in Philosophy and Thinking, Wellington has become recognised as a centre for curriculum development.

Third Form to Fifth Form. Pupils in the Third Form take the International Baccalaureate Middle Years Programme (MYP) which offers both breadth and depth in eight key learning areas: Mathematics, Science, English, Modern and Classical Languages, Humanities, the Arts, Technology and Physical Education. The curriculum accentuates personal enquiry, independent study, internationalism, and social responsibility, with all courses emphasising the links between subjects and between school and the outside world. In the Fourth and Fifth Forms, pupils study up to ten subjects for the MYP, ultimately acquiring IB certification prior to entering the Sixth Form. Within the MYP, all pupils take two IGCSEs in Mathematics

5

and English, while any with particular requirements may take additional GCSEs. The more GCSEs a pupil takes, the more the educational benefits of the MYP are constrained, and so, at the end of the Third form year, we expect the overwhelming majority of Wellington's pupils to opt for minimal GCSEs.

The Sixth Form: A Levels and the IB Diploma. On entering the Sixth Form, pupils may choose between A Levels and the International Baccalaureate Diploma Programme. While plenty of advice is offered, pupils are free to choose the kind of education they want for their future:

A broad, balanced, international
and socially engaged education
for the whole person
International Baccalaureate

An intensive,
specialist education
in a focused range of subjects
A Levels

The International Baccalaureate Diploma Programme offers pupils a world class education as preparation for university and the rapidly changing world beyond. Pupils take a balanced range of Languages, Sciences, Humanities and Arts along with a course in the theory of knowledge and an independent research project. The IB is designed to keep pupils' options open and to stimulate genuine engagement with learning and our global society. The IB's standards are second to none, and its graduates go on to study the full range of courses at universities in the UK and abroad. It should be taken by pupils who are motivated, interested and keen to embrace a world of diversity and change.

A Levels offer a reputation of academic strength, the opportunity to choose a focused range of subjects for specialist study and six-monthly examination modules with regular re-take opportunities. A Levels are demanding and scholarly; they are the standard in the UK and the choice for those who know exactly what they want to do at university and beyond.

Whichever route pupils choose, they will benefit from the guidance of highly qualified teachers trained and experienced in delivering both courses. They will also have the support of their tutors, heads of year, careers officers and many others who will help them to perform to the best of their abilities and secure the outstanding results for which Wellington has become notable in recent years.



results

7

A LEVEL

- Wellington pupils attained the College's strongest ever A Level results in 2009
- At 92%, the A and B grade rate at A Level broke all previous records
- At 62%, the proportion of A grades alone was five points higher than the College's previous best
- 66 candidates attained straight A grades, including 17 with 4 straight As and 3 with 5 straight As—again the College's best ever
- All Oxbridge candidates attained their offers and more students gained places at their preferred universities than ever before
- At 68%, the A and B grade rate at AS Level exceeds expectation and bodes very well indeed for A Levels in 2010, the first year in which Wellington pupils will also present for the International Baccalaureate

GCSE

- We are also delighted by the rise in the College's GCSE results this year
- The Fifth Form attained 67% A* and A grades, the College's second best ever set of GCSE results and a six points improvement on the previous year
- 40 pupils, or a quarter of the candidature, attained straight As and A*s—an exceptional 18 more than previously
- 166 pupils attained 5 A*–C grades—36 more than previously
- 159 pupils attained 8 A*–C grades—41 more than previously

These outstanding results confirm the College's dramatic academic resurgence in recent years and exceed the target of making Wellington a premier division academic school by 2011. They also reflect the success of the College's educational initiatives, including the teaching of positive psychology and well-being; the Harkness method of discussion-based learning; and a focus on developing all eight aptitudes rather than just academic potential.



university

Entrance total for 2001–2008. Total number of pupils: 1,226

9

Bath	17	Newcastle	88
Birmingham	10	Northumbria.	10
Bristol	100	Nottingham	70
Cambridge.	29	Nottingham Trent	10
Cardiff	21	Oxford.	45
Durham	75	Oxford Brookes	59
Edinburgh	48	Sheffield	9
Exeter	50	Southampton	24
Leeds	96	St Andrews	9
London—Imperial College.	29	USA	13
London—King's College.	26	Warwick.	17
London—LSE.	14	West of England	79
London—University College.	42	York	19
Loughborough	20	Other	167
Manchester	36		

For **Oxbridge** applicants we provide guidance, support and administration as part of Academic Extension in conjunction with the Careers Department. The main strategies of our programme are to:

- Raise aspirations early
- Ensure students have excellent knowledge of Oxbridge courses and colleges
- Support students through each stage of the application process
- Liaise between Wellington and Oxbridge colleges

As part of the programme we work with applicants throughout the year and maintain a comprehensive intranet website that guides students, staff and parents through the preparation and application process.



the week

	Monday	Tuesday	Wednesday	Thursday	Friday	Saturday
08:10		Junior Chapel	Voluntary Eucharist	Senior Chapel		Congregational Practice
08:30 – 09:30	1	1	1	1	1	1
09:35 – 10:35	2	2	2	2	2	2
10:35 – 11:05	Break (CR/Support Staff)	Break (Departmental)	Break (HoDs/HMs)	Break (House Teams)	Break	Break
11:05 – 12:05	3	3	3	3	3	3
12:10 – 13:10	4A	4A	4A	4A	4A	Lunch
13:10 – 14:10	4B	4B	4B	4B	4B	Games
14:15 – 15:15	5	Games I	CCF (14:15 – 16:15) Community Service Third Form Activities	Games I	Assembly/Tutorials	
15:20 – 16:20	6				6	
16:30 – 17:45	Enrichment Chapel Choir (Sectionals) 1st/2nd Team practices Clubs	Games II Silver D of E Training 16:30 Academic Detention 16:45	Enrichment Orchestra (Sectionals) Senior Ensembles Clubs	Games II Silver D of E Training 16:30 Academic Detention 16:45	Enrichment Orchestra Concert Band Clubs	
17:50	House Meetings				House Meetings	
18:00 – 19:00	1st Prep Informal Concerts	1st Prep/Lecture	1st Prep Chapel Choir	1st Prep/Lecture	1st Prep	Free Time Socials Trips Detention
19:00 – 19:45	Dinner	Dinner	Dinner	Dinner	Dinner	
20:00 – 21:00	2nd Prep	2nd Prep Play Rehearsals 19:30 – 21:00	2nd Prep Jazz Band 20:30	2nd Prep Play Rehearsals 19:30 – 21:00	2nd Prep Concerts 20:00	
21:00 ONWARD	Quiet in House	Quiet in House	Quiet in House	Quiet in House	Quiet in House	

LUNCH		
	WEEK A & B	
	MON/WED/FRI	TUE/THURS
3RD FORM	4B	4A
4TH FORM	4B	4A
5TH FORM	4B	4A
LVI	4A	4B
UVI	4A	4B

ASSEMBLY/TUTORIALS (FRIDAY, PERIOD 5)					
WEEK A			WEEK B		
14:10 – 14:40	14:40 – 15:10		14:10 – 14:40	14:40 – 15:10	
ASSEMBLY	TUTORIAL		3RD FORM	ASSEMBLY	TUTORIAL
TUTORIAL	ASSEMBLY		4TH FORM	ASSEMBLY	TUTORIAL
TUTORIAL	ASSEMBLY		5TH FORM	ASSEMBLY	TUTORIAL
ASSEMBLY (TH)	TUTORIAL		LVI	ASSEMBLY	TUTORIAL
ASSEMBLY (GS)	TUTORIAL		UVI	ASSEMBLY	TUTORIAL

enrichment

12

We do not do boredom at Wellington. The Enrichment programme therefore provides students with opportunities to explore and enrich their lives well beyond the classroom with any number of Clubs and Societies. For example we presently offer:

- Ancient Hebrew Classes
- Archaeology
- Bardophile
- Bible Studies
- Bush Craft
- Camerata
- Chapel Choir
- Concert Band
- Confirmation Classes
- Creative Writing
- Dance Classes
- Debating
- Drama
- Duke of Edinburgh
- Etiquette
- Expedition Society
- Film Society
- Food for Thought
- French Club
- Introduction to Securities
- Junior Ensembles
- Law Society
- Leadership
- Mandarin/Calligraphy
- Master Chef
- Meditation
- Model United Nations
- Natural History Society
- Noble Rot
- Open Door
- Peer Mentoring/Support
- Percussion Ensembles
- Petrol Heads
- Philosophy Society
- Photography
- Real Ale Society
- Rock Bands
- Round Square
- Senior Chamber Ensembles
- Social Enterprise Programme
- Symphony Orchestra
- Textile Design
- Wellington Chorus
- Wellingtonian
- Wellington Jazz Orchestra
- Yoga





houses

15

Wellington's magnificent buildings and estate offer facilities on a scale that only a large school can provide. However, our pastoral care welcomes children into 17 comparatively small Houses for boarders and day pupils. The focus is on the well-being of the individual within carefully managed tutor groups. We encourage close parental involvement with the school and visits by families and friends.

Almost 20 per cent of our students are day pupils and we expect this proportion to rise slightly over the next few years, following the opening of two dedicated day Houses.

The House is the centre of a pupil's life. Houses vary in terms of size, location and character, but in each the Housemaster or Housemistress, supported by assistants, tutors and a House Matron, has responsibility for looking after the students in his or her care and for monitoring their academic and social development. Staff set a strong framework for behaviour, but apply sanctions fairly, knowing that these are young adults experiencing the mood swings and turbulence of adolescence.

Each House is a self-contained community, organising its own musical events, plays, sports teams and similar. Houses are located either 'in-College', within the main school buildings and quads, or 'out-of-College', in the grounds. Each House has aspects which distinguish it from other Houses, such as its own colours, emblem and a defined House spirit.

At Wellington, there are 11 Houses for boys and 5 Houses for girls with 1 in transition:

Anglesey, Apsley (6th Form), Benson, Beresford, Blücher, Combermere, Hardinge (6th Form), Hill, Hopetoun, Lynedoch, Murray, Orange, Picton, Raglan (day), Stanley, Talbot, Wellesley (day)





day pupils

17

Day pupil education at Wellington College provides the best of both worlds. Day pupils have access to all the facilities and activities at the College with the added advantage of being able to pursue their interests outside of school, or simply spend time with their family in the evening and at weekends. Pastoral care for day pupils is second to none, with a strong house system in place to support them alongside the boarding community. The day houses are well equipped and have been described as having ‘all the benefits of a boarding house—just without the beds!’

Both boys and girls are very actively involved in all aspects of school life, not least inter-house activities, with a day boy winning the prestigious Montgomery music recital competition and the day girls beating the other girls’ houses at the junior house swimming competition, as well as the inter-house tug of war! They also play a leading role in drama, music, art and sport at the school. The parent network is strong, with day pupil parents organising activities such as golfing events, meals and wine and cheese evenings.

Structure of the day for day pupils:

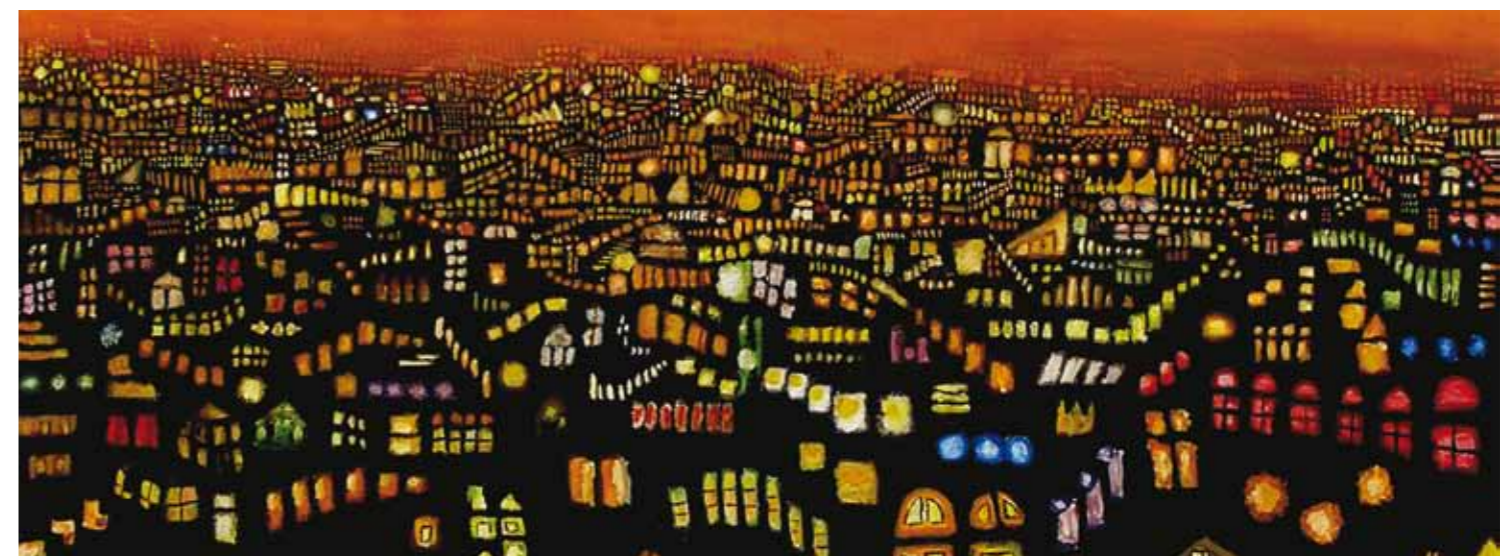
7:30 a.m.	House opens.
8:15 a.m.	All day pupils to have arrived in school.
8:30 a.m.–6:00 p.m.	Lessons and activities.
6:00 p.m.	Day pupils free to go home or stay for prep.
6:00 p.m.–7:00 p.m.	Prep.
7:30 p.m.	House closes.

Day pupils are encouraged to participate in evening and weekend activities if they so wish.



arts & performance

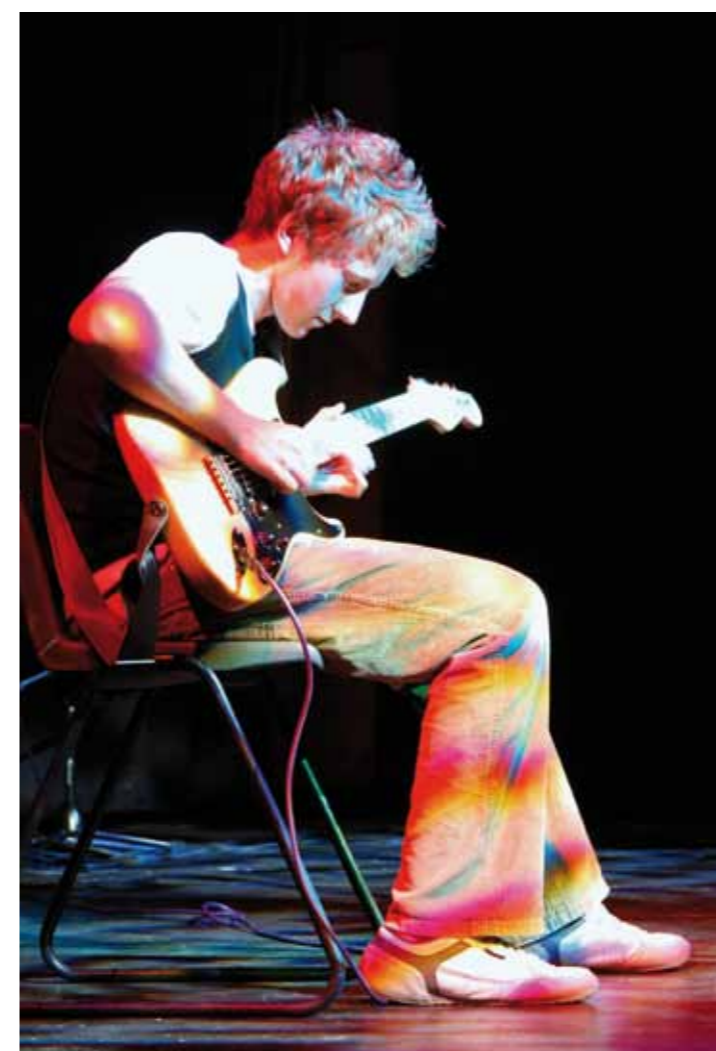
Creative arts form a central part of Wellington life: our aim is to engender in our pupils a lifelong love of, and appreciation for, art in all its forms. Creative talent is fostered and given licence to grow across a wide range of disciplines. In drama, the annual programme of events includes talent shows, musical theatre, serious drama, year group plays and inter-house competitions: it is our intention that any and every pupil has the chance to explore their physical theatre skills. Dance enables experience of a very different discipline, through clubs aimed at the full range of talent and interest with opportunities to showcase learning and talent in shows staged throughout the year. Our Art Department is exceptional and the quality of pupils' work can be seen throughout the College during any visit; several pupils go on to study Foundation Art Courses. In addition to Fine Art, Design and Technology, DT Textiles and Art Textiles also feature in our curriculum and enrichment programmes. The annual Arts Festival, held at the end of the Summer Term, allows pupils to exhibit their work and to attend a stunning array of lectures, workshops and performances by professional actors, writers and film makers. Recent speakers have included Sebastian Faulks (OW), Rory Bremner (OW), actress Greta Scacchi, screenwriter Ronnie Harwood and author Jeanette Winterson. Creative writing, debating and film-making add further to our arts programme allowing pupils to experiment, create and perform.



music

20

Whether the interest is in classical, rock, jazz or pop, Wellington provides an enormously diverse music programme. Our orchestra, conducted by the celebrated Hilary Davan Wetton, performs throughout the year, recent venues including St Paul's Cathedral and St John's Smith Square. We have a close relationship with the London Mozart Players, who provide masterclasses for pupils and share performance space: we believe that enabling our young musicians to work alongside professionals is a truly inspirational experience. Indeed our masterclass programme extends well beyond the LMP, and covers instrumental and vocal musicianship. Other instrumental ensembles include Camerata (strings), Concert Band and Big Band as well as groups for the clarinet, brass, percussion and saxophone. The quality of singing at Wellington is excellent; we have a Chapel Choir, close harmony groups and a choral society. This involves a large number from the local community as well as the annual musical that sees the collaboration with the Drama department. For those who want something of a different note, our jazz and rock groups are well catered for, not least with our own recording studio, Shabby Road. Every pupil is able to learn a musical instrument at Wellington, but if playing is not the thing, then a packed music programme featuring professional musicians as well as our own pupils means that the whole community is able to experience the enriching, vibrant and dynamic musical life of the College.





sport

Sport is an integral part of each pupil's development, well-being and education, as well as being a platform to celebrate all that is unique about Wellingtonians. By fostering an 'active life' philosophy and promoting a lifetime investment in sport and physical activity, we generate a sporting ethos that puts into action the philosophy of the eight aptitudes.

We provide pupils with a transformative experience, using a variety of methods to help individuals and teams achieve their personal sporting aspirations. The Wellington sporting experience is one that provides for both the elite and the novice, for performers and participants, with equal vigour and unites all pupils with a sense of self respect and College pride.





Our overall aim is to promote active participation, personal enjoyment, excellence and a healthy lifestyle. Our talented and dedicated coaching team strives to create the best possible environment for inspiring pupils to learn: one that is open, flexible and at the same time challenging.

Our sporting reputation is 'premier league' and the quality of our performances and results speaks for itself. There are great opportunities for pupils to represent the College in teams across a wide range of competitive sports as well as participating in a number of different recreational activities, all of which are supported by the outstanding College facilities. These sports facilities are extensive and impressive, including 16 rugby and football pitches, 2 floodlit astroturf pitches, a modern and well equipped Sports Hall, an indoor and outdoor pool, 22 hard tennis courts, 9 cricket pitches, an athletics track, 2 lacrosse pitches, 8 netball courts, a gym, 2 dance studios, basketball/volleyball courts, a recently refurbished rackets court, squash courts, badminton courts, a climbing wall, a shooting range and a nationally acclaimed nine-hole golf course in the grounds. Most recently we have completed a brand new, and state-of-the-art, sports pavilion, which will inspire our students to achieve more and act as a centre to celebrate the numerous successes our pupils have already achieved and those yet to come.





activities

27

There are clubs and societies at Wellington for just about every popular hobby and interest. At the start of every academic year the College Carnival comes and encapsulates the range. This includes master chef, creative writing, climbing, film, canoeing, mountaineering, skiing, photography, chess, debating, Open Door (Christian forum) and many more. These take place in times outside the classroom—on weekday afternoons and evenings, at weekends and during the holidays. Three significant examples are mentioned below.

The Duke of Edinburgh's Award Scheme run at the College is very successful and popular, administered on site by teachers and qualified leaders from Wilderness Expertise, who are able to offer the necessary advice and support. Pupils develop their initiative, organisational skills and sense of responsibility.

Every member of the Fourth form and many other students and staff, enjoy the 'CCF'—Combined Cadet Force. Nearly 400 cadets and 20 officers take part in activities, participating in overnight exercises, courses and week-long adventurous training and military camps. The aim of CCF is to develop the qualities of team work, self-reliance, resourcefulness, leadership, responsibility, and a sense of public service. Senior cadets can use their CCF experience for the service element for the Duke of Edinburgh Gold Award.

Wellington College is a Round Square school, playing a full and active part in international conferences, projects and exchanges as well as developing service and fund raising initiatives of its own. Decisions are made through a Round Square Committee, which is chaired by an elected member of the student body.

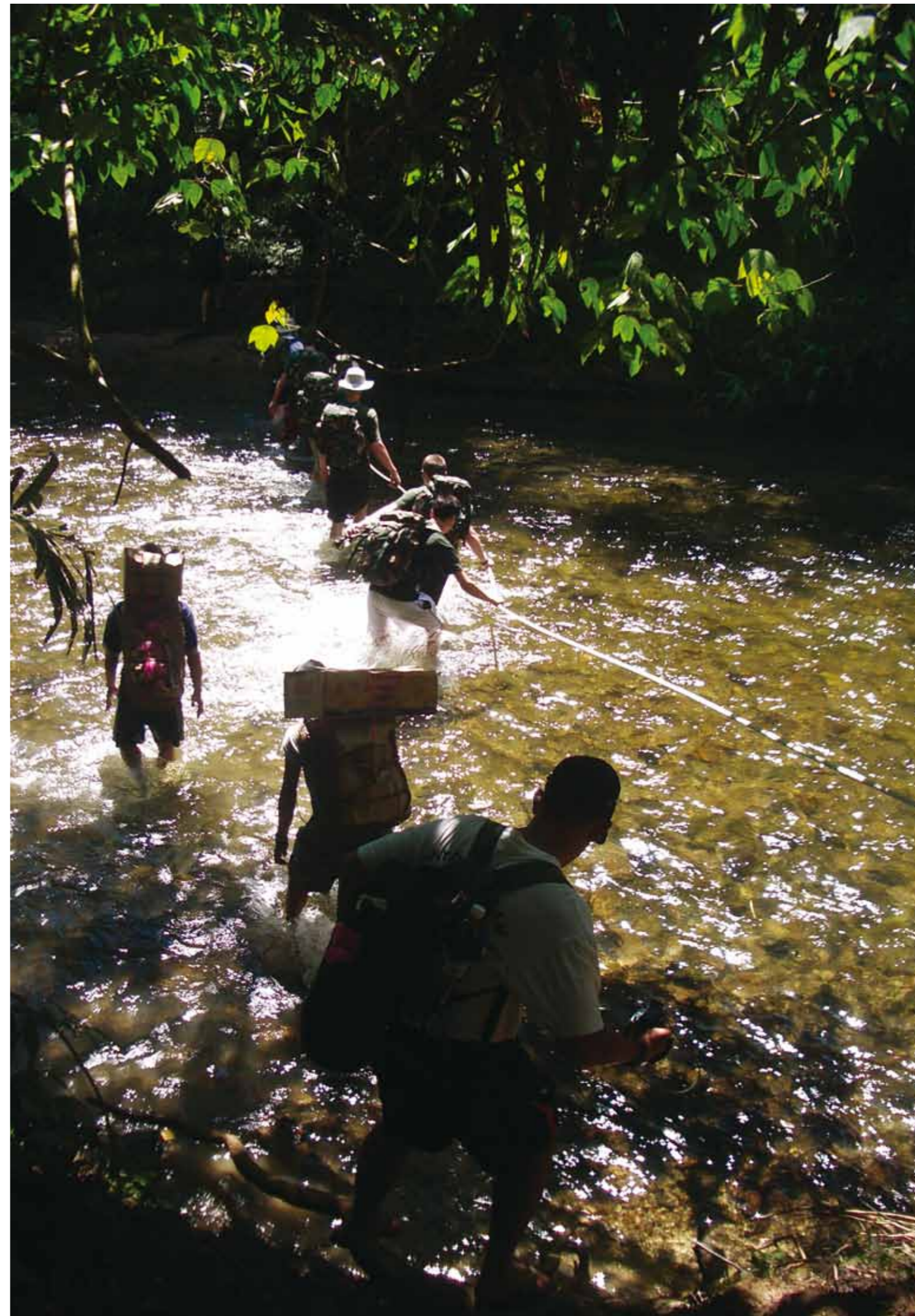
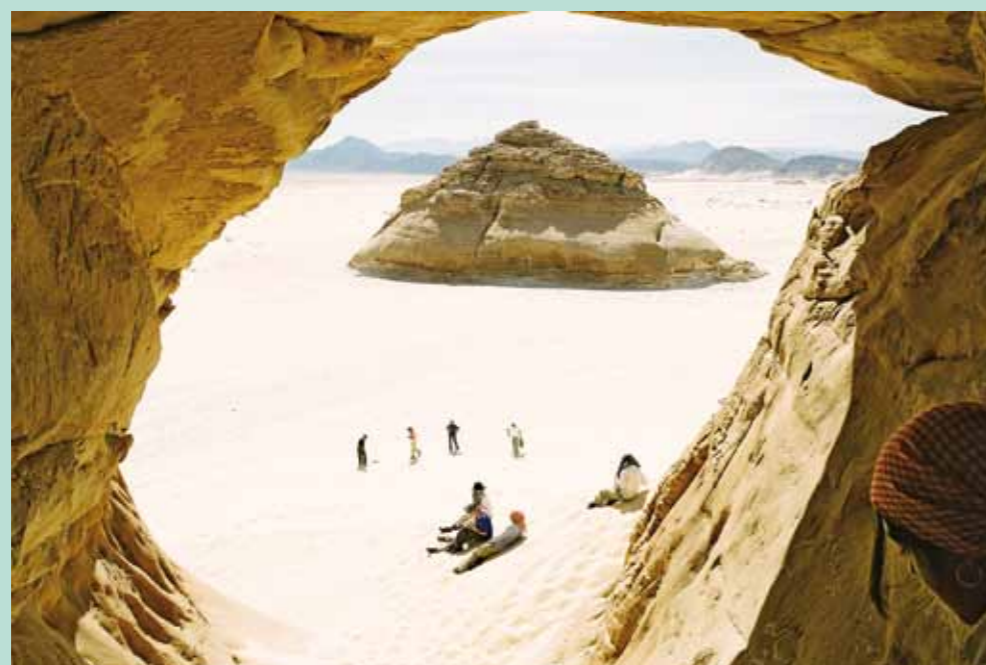


expeditions

28

Expeditions and trips in the school holidays are often the highlight of the year for groups of our students. The experiences are remembered for a lifetime for their enjoyment, camaraderie, meaning and challenge. Such ventures are extremely popular at Wellington and are often set up in response to student requests.

Over the last two years we have run academic trips to France, Spain, Greece, Italy, the Alps, China, New York and Poland, along with sports trips to India, South Africa, Ireland, Argentina, Abu Dhabi and the USA. Service trips have run to India, Peru, Uganda, Sierra Leone and Romania and adventurous expeditions to France, the Alps, Norway and Ireland. Last year the choir sang in Munich and this year a joint drama and music tour is planned to China.





beyond wellington

31

Wellington's wider community involves not just parents and Old Wellingtonians but our local community, local schools, charities, the Wellington Academy in Wiltshire and many friends and supporters.

We actively welcome involvement in many aspects of school life and there is a busy schedule of events, trips, lectures, fundraising, community service and social activities.

The school aims to be second to none in its activities for, and openness to, parents. The 'Wellington College Association' offers an extraordinary range of intellectual, social and cultural events and trips for parents to enjoy in Britain and abroad. The parents' forum and the Old Wellingtonian Society are similarly supportive to families.

We believe that every child should be engaged in positive works and service to others, if they are to have a proper education and become full human beings. We seek active partnerships with our neighbours, and look to forge mutually beneficial relationships with state schools and the local community. Looking after others lies at the very heart of the mission of the school.



applying

32

In summary, the admission process involves the following steps:

- **Registration with fee (before or after a visit to the school)**
- **Pre-testing**
- **Acceptance of conditional place with Confirmation of Entry Form and fee**
- **Entrance Examinations: College's own, Scholarship or Common Entrance**
- **Attainment of required standard**
- **Acceptance of place**

Registration Forms are available from the Admissions Office or from the website.

Most girls and boys join Wellington when they are 13+ (Year 9). A few may join at 14+ (Year 10). There is also a Sixth Form intake at 16+ (Year 12). Students occasionally join at other times, but this can be difficult, if mid-way through their GCSE or Sixth Form syllabus. The formal process of attaining a place at Wellington is summarised above.

We are experiencing strong demand for places at the moment. Registration can be accepted at any time before closing dates given. Early Registration is recommended: the date of receipt of the completed Registration Form with fee is the arbitrating factor at the stage of prioritising children on lists for Houses.

We are pleased to take details of candidates for the Waiting Lists, in case changes and any late availability of a place or places will allow us to assist.

An early indication of choice for boarding or day status is most helpful. We ask for confirmation in correspondence just prior to Pre-testing.

We do recommend attendance at one of our Visitors' Days.

fees

33

Registration Fee. A non-refundable Registration Fee of £100 is payable when a pupil's name is first registered for entry.

The Entrance Fee. An Entrance Fee of £1,000 is required by the College, when a boy or girl is offered a conditional place at Wellington College, in order to confirm definite candidature. For successful candidates, £500 of this sum will be returned with the second term's account and a further £375 will be credited to the final account. £875 will be refunded only if a boy or girl is unable to come to the College for bona fide medical reasons or fails to come up to any entry standard to which they may remain subject.

Offers for entry at age 13+ are made after Pre-testing at 11+ and remain subject to success in Scholarship, Common Entrance or the College's own entrance examinations.

Offers for entry at age 16+ are made after the College's entrance examinations and remain subject to published criteria for success at GCSE.

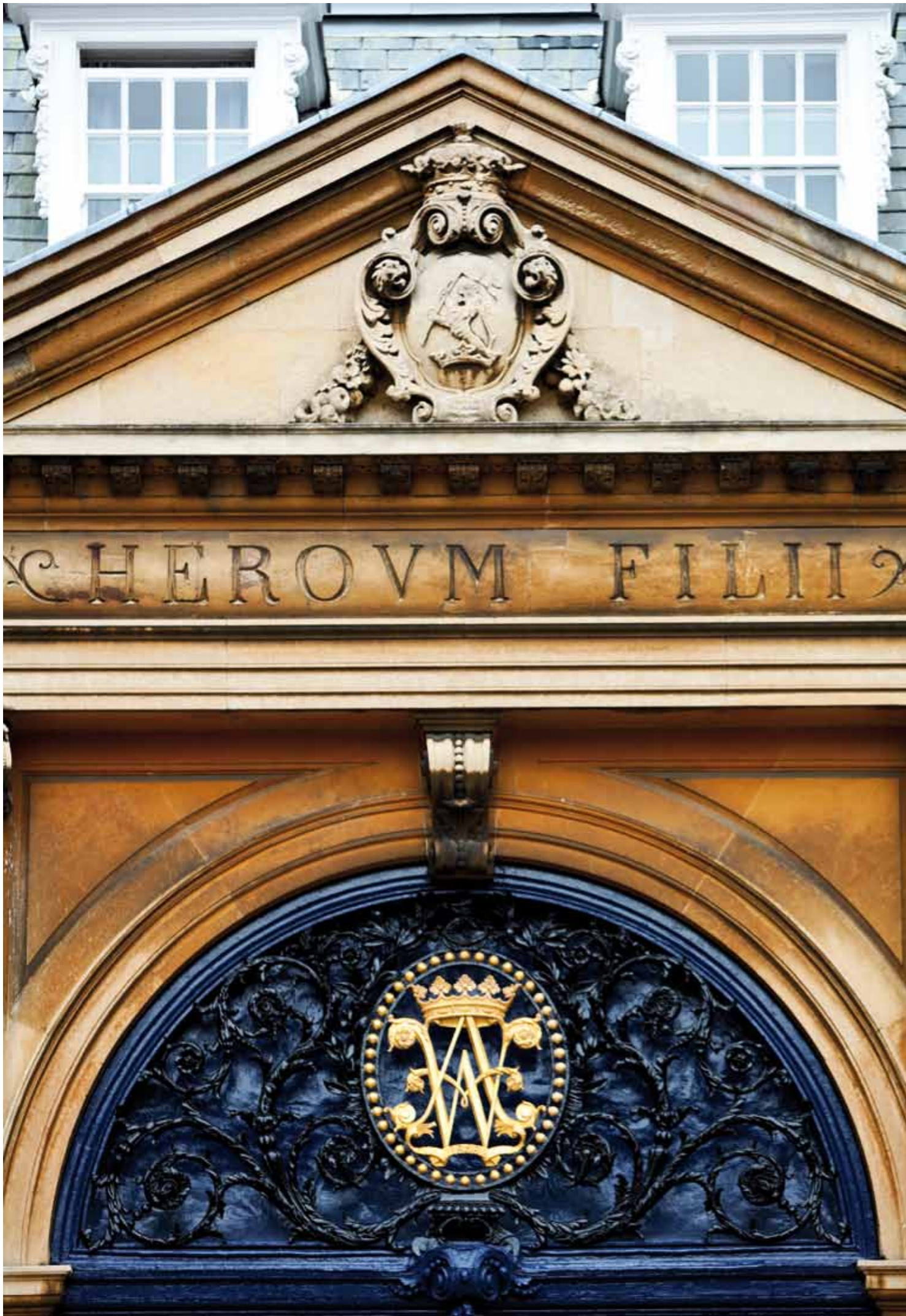
College Fees. Fees are charged termly in advance and for 2009–2010 are as follows:

Boarding Fee £9,235 per term in advance

Day Fee (in boarding houses) . . . £7,845 per term in advance

Day Fee £6,920 per term in advance

The fees are inclusive of all the normal maintenance and recreational requirements of the pupil. They include the provision of linen (except towels), laundry, maintenance and reasonable repair of clothes (but not marking, dry cleaning or shoe repair), games, physical education, swimming, normal medical treatment in the College Medical Centre, and personal accident and dental insurance cover. So far as is possible 'extras' are kept to a minimum. Information is available on request from the Finance Office about our Fees in Advance scheme.



awards

35

Information is presented on our website, and a booklet may be obtained from the Admissions Office, with details about the Scholarships, Exhibitions and Bursaries that are available to support pupils on entry at age 13+ or 16+.

Awards are available in a range of categories: Academic, Music, the Arts (Art, Design and Technology, Drama, Dance) and Sport.

The detailed information will explain aspects such as application, requirement, examinations, assessments, timetable and tenure.

Awards provide reduction of the College fees. This reduction may be enhanced by a bursary, if parents can demonstrate, through a means testing procedure (details from the Bursar's Office), that they could not otherwise send their child to Wellington College.

Foundation places: *Heroum Filii*. Very generous remission is available for sons and daughters of deceased military servicemen and servicewomen and of others who have died in acts of selfless bravery, subject to entrance requirement and according to the rules of the Foundation.



finding us

36

By Road: There is only one entrance to the College grounds. **ANY 'SAT NAV' SETTING MUST INCLUDE DUKE'S RIDE, CROWTHORNE.** (The entrance from Byron Drive/Sandhurst Road is only accessible to cardholders.) We are very conveniently set between motorways, but final navigation is 'intricate'.

From the M4: Exit at junction 10 and take the A329M to Bracknell. Continue to the traffic light-controlled roundabout and turn right following signs for the A3095. At a sequence of roundabouts follow signs for Crowthorne, eventually turning right onto the B3348 [signposted: Crowthorne B3348].

**On entering Crowthorne, go straight on at the first roundabout [signposted: Finchampstead B3348] and then bear right at the second (mini-) roundabout onto Duke's Ride [signposted: Finchampstead, Eversley, Station & Shops]: follow Duke's Ride for approximately 1 mile and the gates to the College are on the left. (Easiest access for coaches is to continue past gates, over railway bridge, double back at roundabout and turn right into grounds.)*

From the M3, Junction 3: Take the A322 towards Bracknell (under the A30 and then keep left to follow sign for Bracknell). Turn left (first exit at roundabout) onto the B3430 [signposted: Crowthorne (A3095), Finchampstead & Arborfield B3430] and please observe greatest care and all traffic signs along this infamous stretch of road. At the next roundabout turn left (first exit) onto the A3095 [signposted: Crowthorne A3095 & Sandhurst]: a short stretch of dual-carriageway; along this, move into the right-hand lane in order to turn right at the next roundabout onto the B3348 [signposted: Crowthorne B3348]; then see above **on entering Crowthorne.*

From the M3, Junction 4: The simplest of complex and busy alternatives is to follow signs for A331 to Blackwater [also signposted Camberley] and then continue straight through onto A3095 for Bracknell, straight on at a series of roundabouts, onto the by-pass and then turn back left at the roundabout onto the B3348 [signposted: Crowthorne B3348]. Then see above **on entering Crowthorne.*

From the M3, Junction 4A: Take the A327 [signposted: Reading A327, Blackwater (A30) Yateley] past Minley Manor and Gibraltar barracks. At roundabout turn right (second exit) [signposted: Reading A327, Blackwater (A30) Yateley] and keep in the left hand lane, in order to go straight across the A30 at the roundabout which follows almost immediately

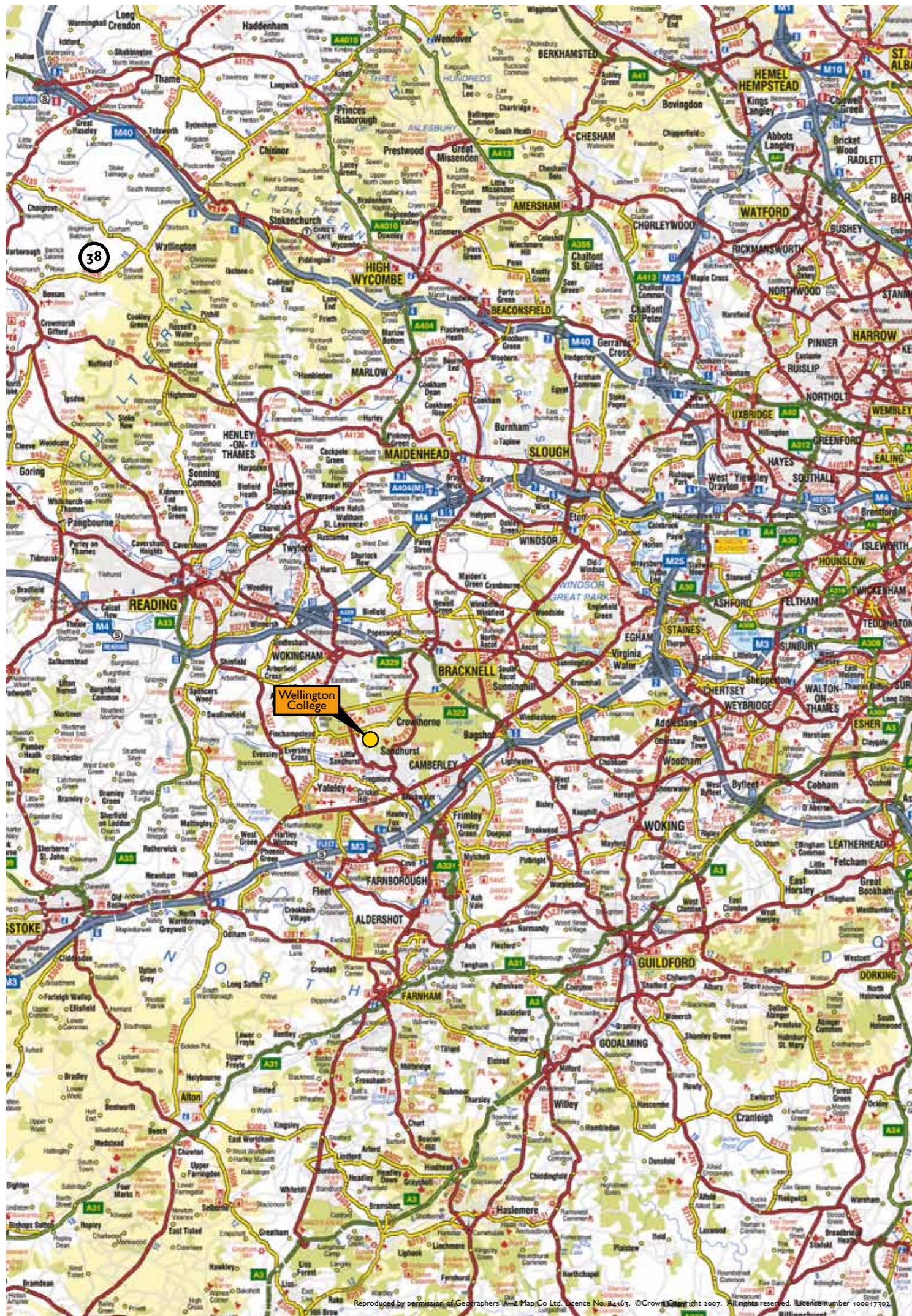
37

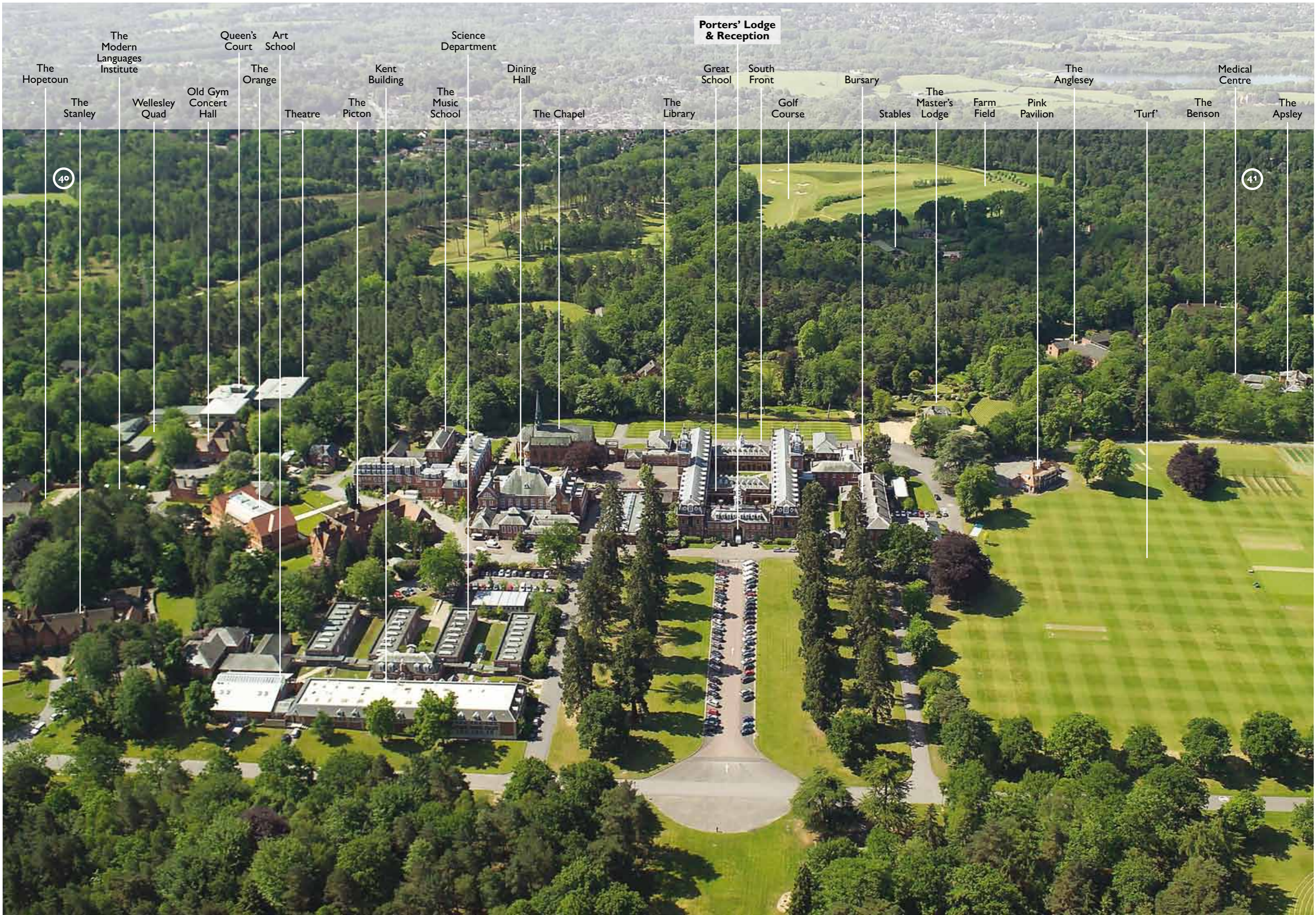


[= second exit, signposted: Cricket Hill, Yateley & Sandhurst]. Descend into Yateley and, at the roundabout at the bottom of the hill, turn left [= first exit, signposted: Eversley B3272 & Yateley] then almost immediately filter right, to turn right [signposted: Sandhurst & Crowthorne]. Continue to T-junction: there turn left [signposted: Wokingham A321]. Continue to roundabout and turn right onto B3348 towards Crowthorne and into Duke's Ride, and from there the College gates are on the right in almost half a mile.

By Air: The main London airports are all within easy reach of the College, Heathrow: 40 minutes, Gatwick and Luton: 1¼ hours by road. All have regular scheduled flights from all UK, European and international destinations.

By Rail: The nearest main line station is Crowthorne, which is on the Reading to Guildford line and is only a 5 minute walk away.





Porters' Lodge
& Reception

The
Hopetoun

The
Modern
Languages
Institute

Queen's
Court

Art
School

Science
Department

The
Stanley

Wellesley
Quad

Old Gym
Concert
Hall

The
Orange

Theatre

The
Picton

Kent
Building

The
Music
School

Dining
Hall

The Chapel

The
Library

Great
School

South
Front

Golf
Course

Bursary

Stables

The
Master's
Lodge

Farm
Field

Pink
Pavilion

The
Anglesey

'Turf'

The
Benson

Medical
Centre

The
Apsley

40

41

42



SEPT 2009

Ⓟ Visitors' Car Park Path

YARDS	50	100	150	200	250
-------	----	-----	-----	-----	-----

INDEX

- Academic. 4
- Activities. 12, 27
- A Levels 5, 7
- Applying 32
- Arts 18
- Awards. 35
- Beyond Wellington. 31
- Bursaries 35
- CCF 27
- Clubs. 12, 27
- Day Pupils 15, 17
- Duke of Edinburgh Awards. 27
- Enrichment. 12
- Entrance Examinations 32
- Exhibitions 35
- Expeditions. 28
- Facilities 25, 40, 41
- Fees 33
- Finding Wellington 36, 37
- Foundation 35
- GCSEs 5, 7
- Houses. 15
- International Baccalaureate. 1, 4
- Introduction 1
- Learning 4
- Map of Local Area 38, 39
- Map of the Grounds 40–43
- Middle Years Programme. 1, 4
- Music. 20
- Old Wellingtonian Society 31
- Oxbridge. 7, 9
- Parents' Forum. 31
- Pastoral Care. 15
- Performance 18
- Pre-Testing 32
- Registration 32, 33
- Results 7
- Round Square 27
- Scholarships 35
- Societies 12, 27
- Sport. 23, 25
- University 9
- Week's Structure, The 11
- Well-being 1
- Wellington Academy, The 31



Admissions Office

wellingtoncollege.org.uk

admissions@wellingtoncollege.org.uk

Wellington College, Crowthorne, Berkshire RG45 7PU

telephone: +44(0)1344 444013; fax: +44(0)1344 444115